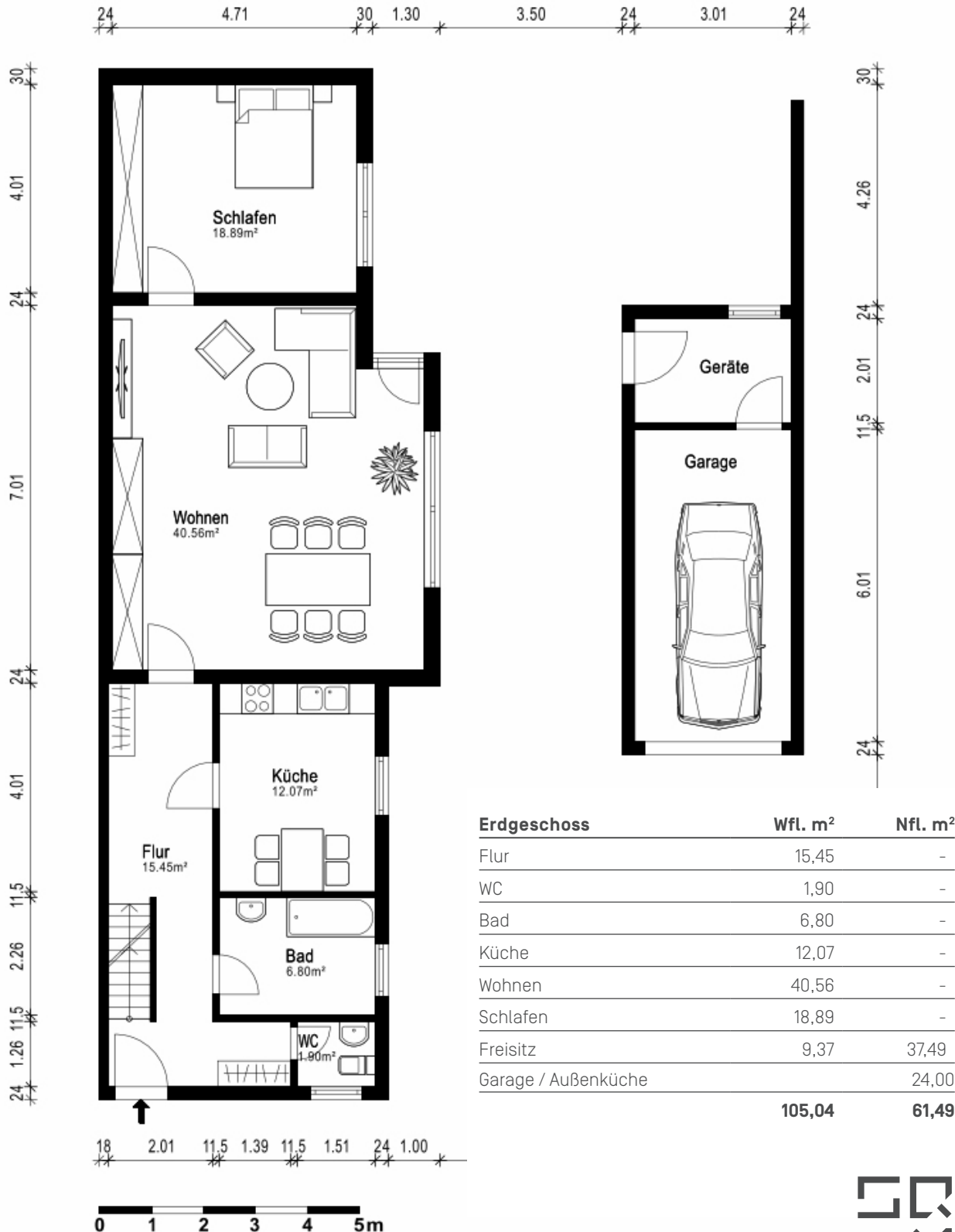
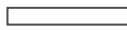


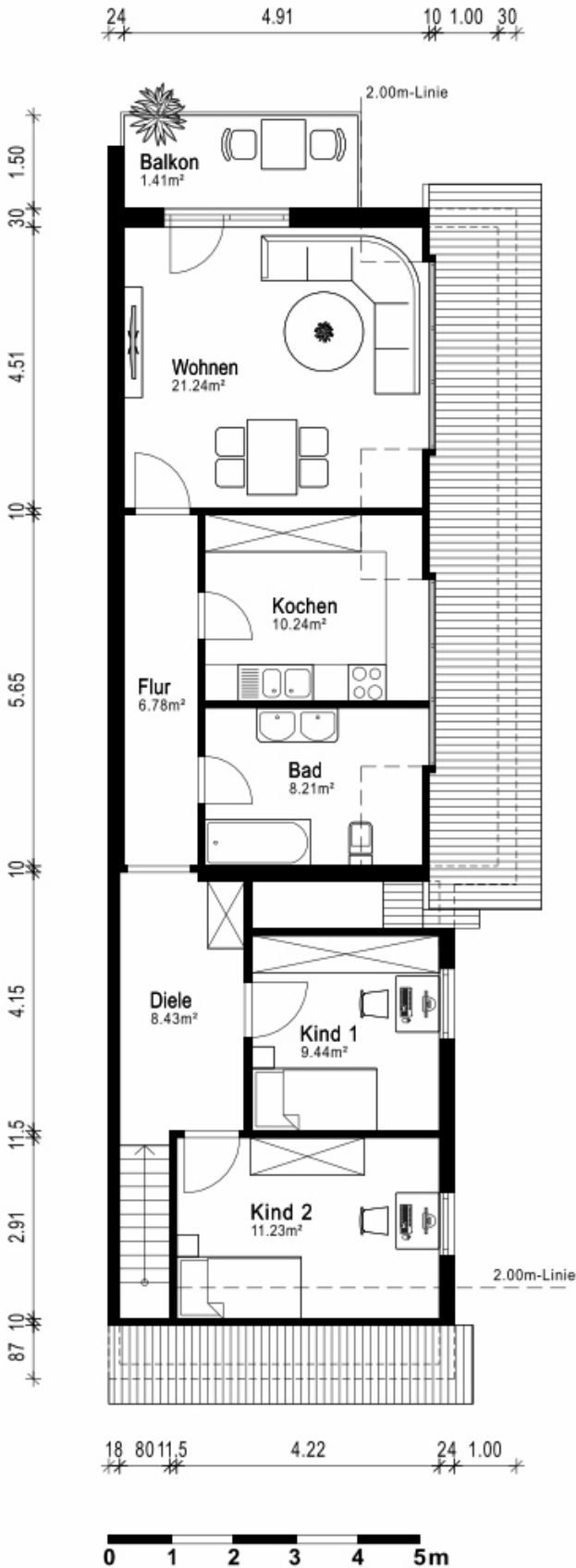
GRUNDRISS ERDGESCHOSS ZOPPOTER STRASSE 2, 90766 FÜRTH



Erdgeschoss	Wfl. m ²	Nfl. m ²
Flur	15,45	-
WC	1,90	-
Bad	6,80	-
Küche	12,07	-
Wohnen	40,56	-
Schlafen	18,89	-
Freisitz	9,37	37,49
Garage / Außenküche		24,00
	105,04	61,49

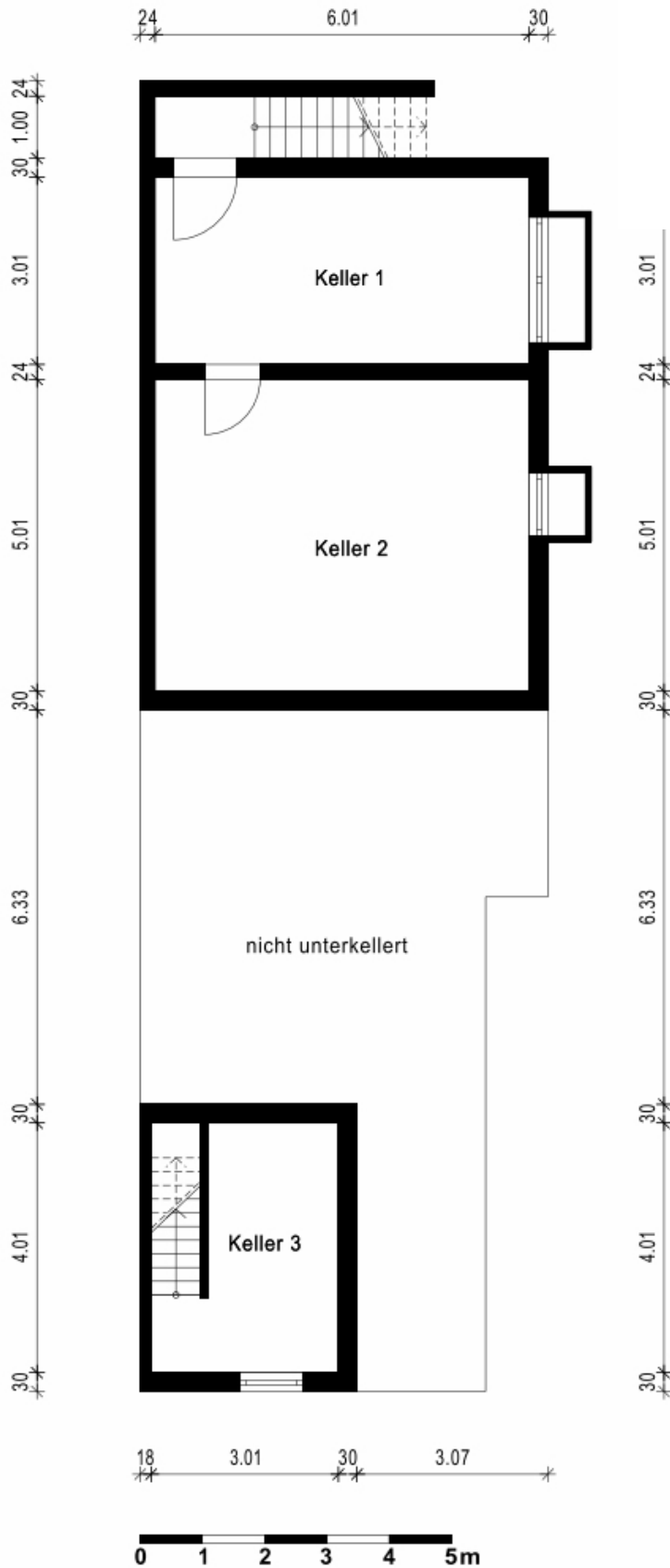


GRUNDRISS OBERGESCHOSS ZOPPOTER STRASSE 2, 90766 FÜRTH



Obergeschoss	Wfl. m ²	Nfl. m ²
Kind 2	11,23	-
Kind	9,44	-
Diele	8,43	-
Flur	6,78	-
Bad	8,21	-
Kochen	10,24	-
Wohnen	21,24	-
Balkon	1,41	5,64
	76,98	5,64

GRUNDRISS UNTERGESCHOSS ZOPPOTER STRASSE 2, 90766 FÜRTH



Untergeschoss	Wfl. m ²	Nfl. m ²
Keller 1		18,09
Keller 2		30,11
Keller 3		5,60
		53,80